

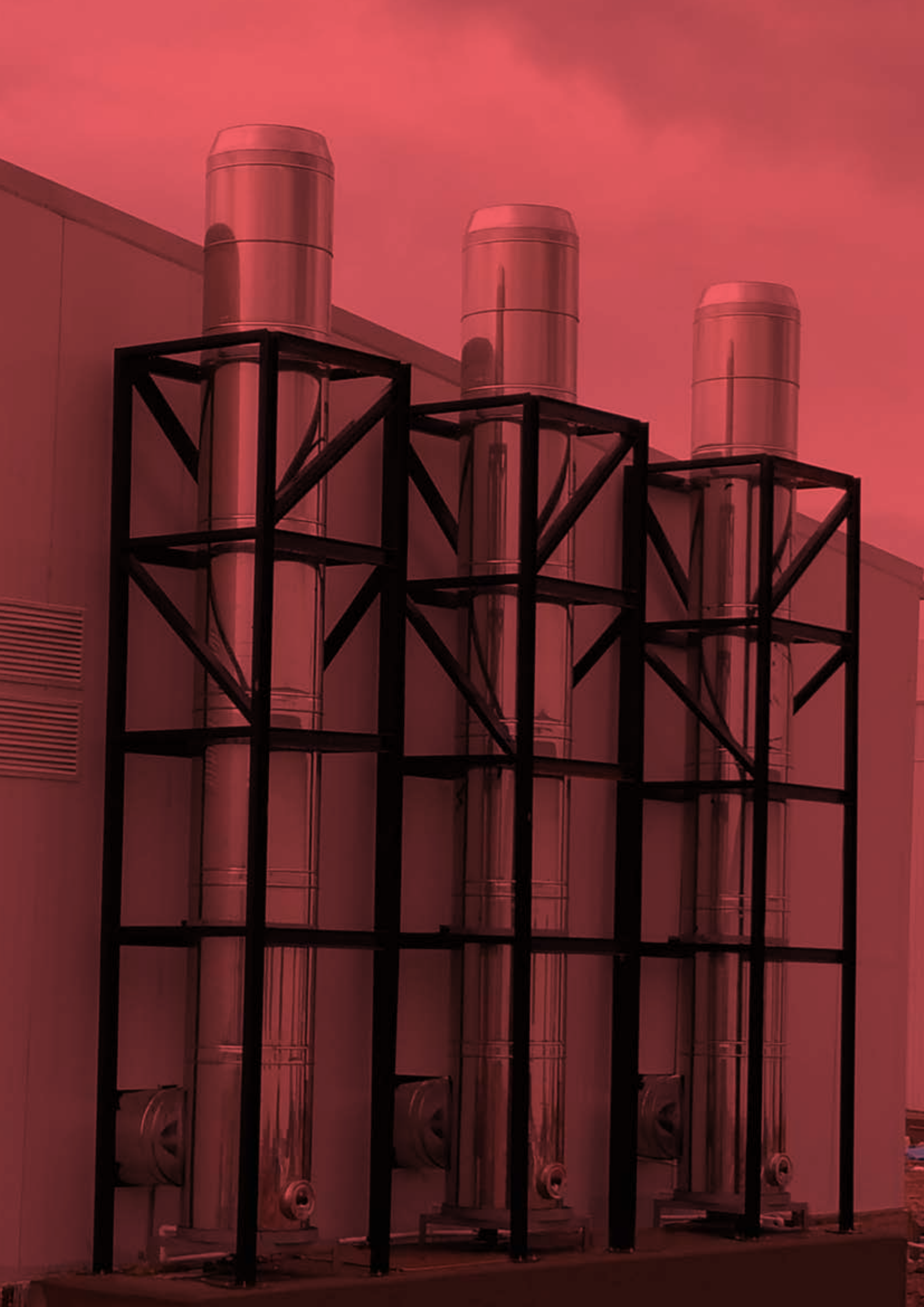
**30**<sup>TH</sup>  
ANNIVERSARY  
WITH PROUDLY

" A good boiler provides  
**maximum efficiency** only with  
a well designed **chimney** "



[www.rottek.com.tr](http://www.rottek.com.tr)

**rottek**  
"chimney expert"





Rotek Energy & Chimney Systems founded in 1993.

Rotek is engaged with production of stainless steel prefabricated and free standing chimney systems, refuse chutes, linen chutes, pneumatic conveying piping products, kitchen hood and industrial hood exhaust ducts, ventilation ducts, air supply and vent towers, flue gas purification filters, chimney damper, silencer, fan and special designed chimney terminals as well as rotary cap for residence building , business and shopping center, hotels, hospitals, factories and industrial plants.

Rotek, provides comprehensive solutions to its customers, is the leader company of the sector in Turkey with its experienced, computer systems supported staff, European standard products and after sales service.

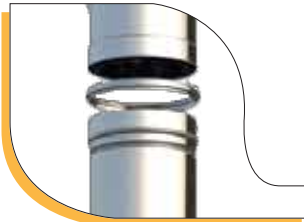


# ROTEK CHIMNEY SYSTEMS



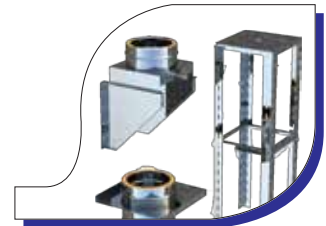
Rotek chimney systems are designed for use in all gas, liquid or solid fueled heating systems (negative and positive condensation or without condensation), diesel generators or co-generation systems and hood exhaust systems.

The standard products are made of high-grade, corrosion resistant AISI 316L and 316Ti stainless steel with thicknesses of between 0.40 mm and 3.00 mm in accordance with the diameters of the chimneys.



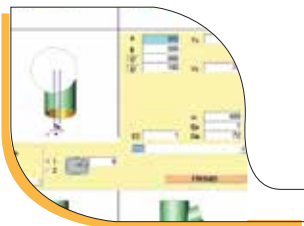
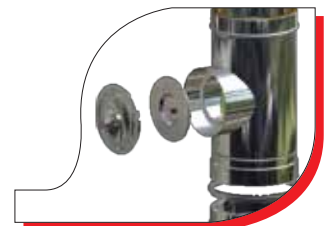
The modules have 50 mm male - female connection. For a smooth connection and good transition, the diameter of one end of the module is enlarged in automatic machine. A perfect leak proofing is achieved, thanks to precise joining, use of high temperature sealant at the joints and tightening with external clamp. The chimneys are specially designed to compensate the thermal expansions themselves.

Also, the telescopic supports that are anchored to the concrete shaft in the vertical axes between 3 m and 50 m spacing according to the diameters, compensate the thermal expansions and bear the static loads of the chimney at the same time.



Specially designed chimney terminals and caps, which prevent back draft and increase draft, are used according to the place, altitude and weather conditions of the site, where the chimney will be installed.

The chimney cleaning hole covers, measuring and draining ports are made of stainless steel, with a leakproof design. These are used at suitable place of the chimney and enable the cleaning of the chimney and draining the condensation water.



ROTEK chimneys are designed with the help of computer aided design tools with great care, to provide you with the optimal solutions.

ROTEK chimneys are manufactured at automatic workbenches with TIG or PLASMA welding, using protective gases for welding, with homogeneous and smooth results. This way, the acids in the waste gases can not do any harm to the welding joints.



# WHY ROTEK ?

We, as Rotek, offer you advice and solutions for high-performance stainless chimney applications and solutions to chimney problems, and present you with technological developments and devices in these matters.



**CE CERTIFICATE**  
(EN 1856-1:2009, TZUS, a.a. 1020),  
(EN 1856-2 2009, TZUS, a.a 1020),



**CE CERTIFICATE**  
(EN 13084-7:2005  
/ AC 2009 TZUS, a.a 1020, 4



**GOST-R Certificate**



**Free standing chimney calculation  
and design according to CICIND,**



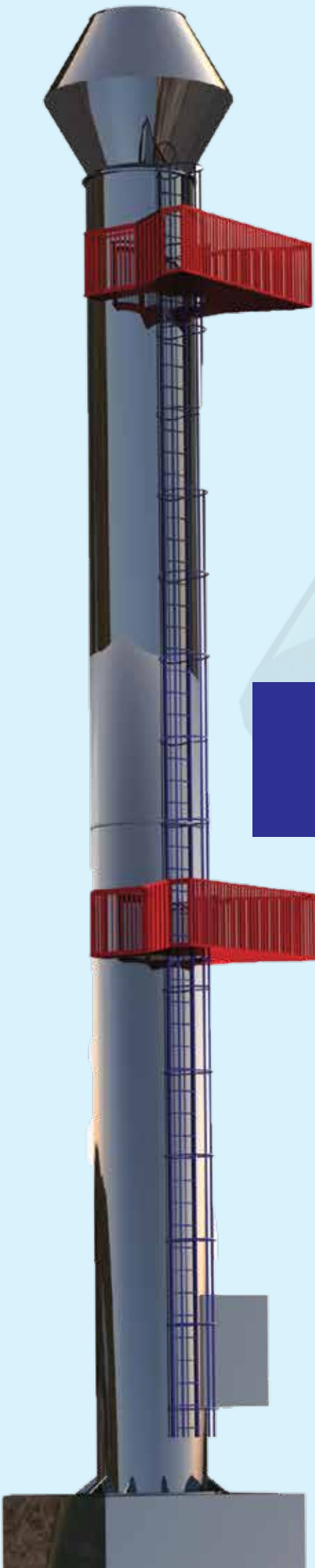
**Sales through dealers in 30 provinces  
across Turkey, exports to 20 countries.**



**30 years of experience and expert  
engineers with appropriate solutions**

Appropriate for use in negative and positive draft systems, Leak proof and safe use under 5000 Pa pressure, H1 class and T600 chimney gas temperature, 20 years of experience and convenient solutions with expert engineering, Chimney projects in accordance with EN 13384-1, Self-standing chimney calculations in accordance with CICIND, Centralized solutions for all chimney problems and equipment, Flexibility of custom design for required places and wide range of products, Sales through distributors in 30 cities of Turkey, exports to 20 countries.





# FREE STANDING CHIMNEY SYSTEMS



# RTK-FS SERIES

RTK-FS self standing chimney systems are usually used in industrial plants or factories, power plants, waste water or gas treatment plants, petrochemical complex and in places where the boiler room is far from the main building. The chimney is double walled, foundation anchored and stand alone type. The inner walls may be manufactured with continuous welded or flange connected and available to H0 tightness class according to the type of use. Rockwool or ceramic wool insulation is inserted between the walls. It has low thermal conductivity, since the heat of the chimney gas is not considerably transferred to the environment, the chimney efficiency is high. The outer shell are designed in accordance with the static load conditions and made of steel. The shell may be epoxy coated or clad with stainless steel for protection from atmospheric corrosion. The chimneys may be designed for wet or dry systems up to 1000 °C temperature.



- CE Class** : Temperature Class (°C) : T200- T400- T550- T750- T900- T1000  
 Pressure Class : H0  
 Condensation Class : Dry(D) and Wet(W) systems  
 Chemical Action Resist. : L10-L20-V20-H20  
 Inner Wall Material : 1.0038 - 1.0570 - 1.0425 - 1.4301 - 1.4541  
 - 1.4571 - 1.4404- 1.4539- 1.4828- 1.4841
- Application** : Soot Fire Resistance : O or G

**Advantages** : Burners running on gas oil, fuel oil, natural gas, lpg, coal, wood; over more can be used in steam boilers, hot-oil boilers, cogeneration, gas or diesel generator, turbine generator and industrial systems with fan.

The insulation prevents heat transfer to the outer shell wall. The shell is not deformed in case of soot fire. Since the temperature of the shell will not rise, the anchorage bolts will not be deformed due to high temperature. Since the corrosive flue gases, which contain acid, are conveyed through the inner chimney, the static properties of the chimney will not weaken in time.





## Industries

- Power Plants
- Waste Incineration
- Biomass Plants
- Glass Plants
- Industrial Plants
- Paper Mill Plants
- Gas
- Gas Turbine & Diesel Power
- Cement & Brickyard Plants
- Chemical & Petrochemical
- Steel & Mineral Plants
- Ventilation Plants



Petrochemical



Oil & Gas



Chemical



Government



Power Generation



Pulp & Paper



Manufacturing



Waste to Energy

# REFERENCES

Ford Otosan Gölcük Fabrikası - Kocaeli	Chimney
Ford Otosan Eskişehir Fabrikası - Eskişehir	Chimney
Hyundai İzmit - Kocaeli	Chimney
Unilever Algida Fabrikası - Konya	Free Standing Chimney
Hospital Nobo Otrobanda - Curaçao, Caribbean	HVAC
Cargill Gıda - Balıkesir	Free Standing Chimney
TC Moldova Büyükelçilik Binası - Moldova	Free Standing Chimney
Tekko Toyotetsu Otomotiv Gebze İzmit	Chimney
Toyota sa İzmit	Chimney
Unilever Algida Fabrikası - Çorlu	Free Standing Chimney
Roche a.ş. İlaç İstanbul	Chimney
Glaxowellcome a.ş. Gebze İzmit	Chimney Automation System
Sandoz Syntek İlaç fabrikası Tuzla İstanbul	Chimney
Thyssen Krupp Eurinox Servis Merkezi Gebze İzmit	Chimney
Procter & Gamble Fabrikası - Romanya	Chimney
Procter & Gamble Fabrikası İstanbul	Chimney
Jotun Boya Fabrikası Çerkezköy Tekirdağ	Proses Chimney
Basf Kimya Gebze İzmit	Chimney
Basf Elastogran Gebze İzmit	Chimney
Sika Yapı Kimyasalları Fabrikası Tuzla İstanbul	Chimney
Bosch Siemens a.ş. Fabrikası Çerkezköy Tekirdağ	Free Standing Chimney
Bosch a.ş. Tesisleri Bursa	Chimney
Bosch Rexroth Tesisleri Bursa	Chimney
Beko Elektronik a.ş. Beylikdüzü İstanbul	Chimney
Johnson Control Fabrikası - Romanya	Chimney
Sew Eurodrive Grup Gebze	Chimney
Westminster Park Plaza Bridge Hotel Londra - İngiltere	Chimney
Kommetzbank Merkez Binası Almaty - Kazakistan	Refuse Chute
Frans Maas Lojistik - Romanya	Chimney
Renault Mais Bursa	Chimney
Fritolay Cips Fabrikası Tarsus	Chimney
Schattdecor Fabrikası Gebze İzmit	Chimney
İstanbul havalimanı İstanbul	Chimney
Türkiye Finans Merkezi İstanbul	Chimney
Westminster Park Plaza Bridge Hotel London - England	Chimney
Zwitina P.P. Plant - Libya	Free Standing Chimney
Agip Kco Kashagan Petrochemical Comp. Aytrau - Kazakhstan	Chimney, Hvac
Aioc Central Azeri CWP Platform - Azerbaijan / Chimney	Chimney
Chevroil Refinery Plant IB MOA Tengiz - Kazakhstan	Free Standing Chimney
Sewerage and Drainage Basrah AAT Plant - Iraq	Chimney
Monaco Towers - Romania	Chimney
Al Tadamon Twin Towers - Libya	Hvac

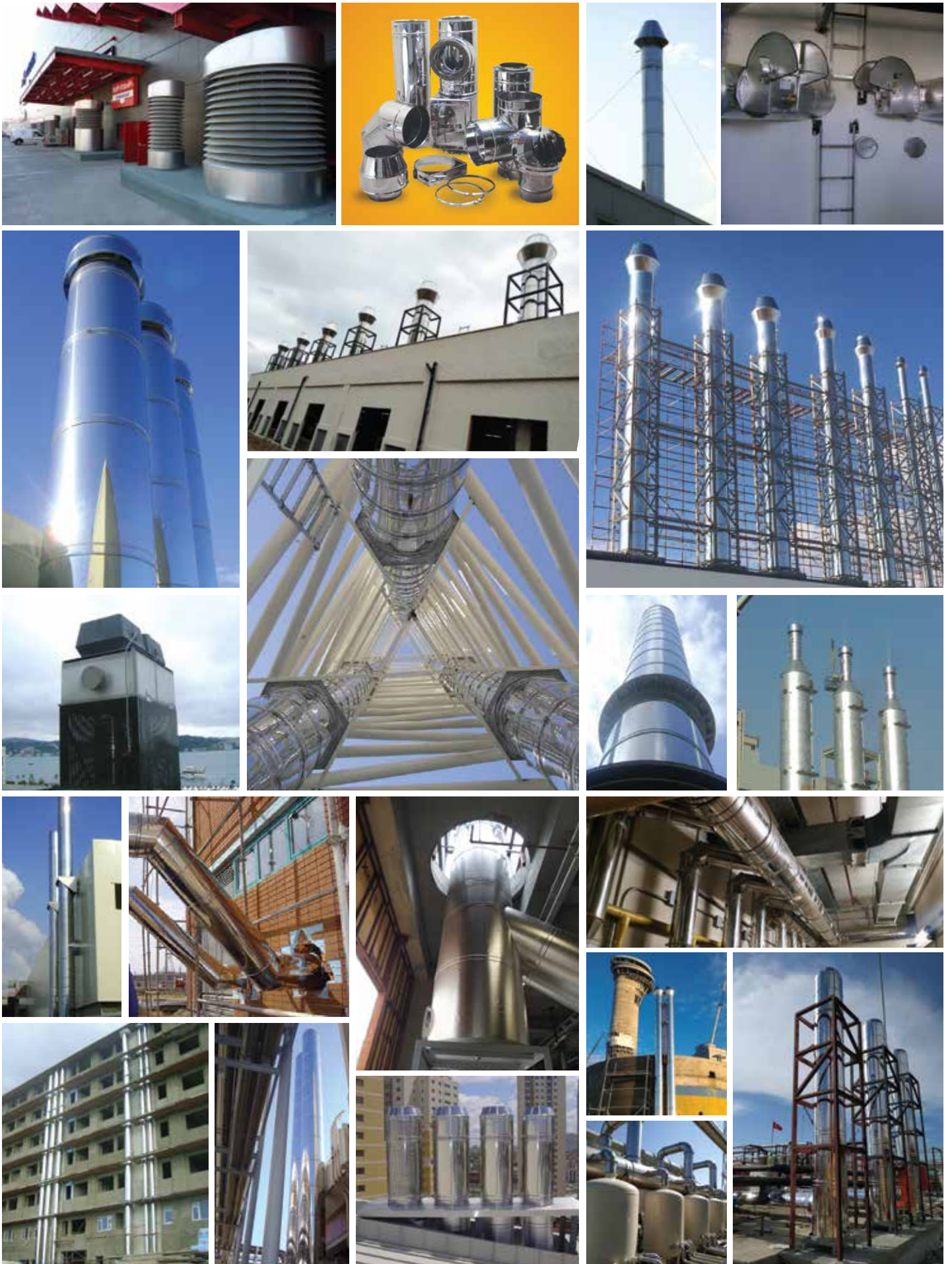
## REFERENCES

Presidential Palace - Azerbaijan	<b>Chimney, Fan Automation</b>
Haydar Aliyev Cultural Center - Azerbaijan	<b>Chimney</b>
Tripoli Convention Center - Libya	<b>Chimney</b>
Kommetzbank Center Almaty - Kazakhstan	<b>Refuse Chute With Separator</b>
Astana University - Kazakhstan	<b>Chimney</b>
Bosch Siemens A.Ş. Factory Çerkezköy Tekirdağ	<b>Free Standing Chimney</b>
Procter & Gamble Factory - Romania	<b>Chimney</b>
Mardan Palace Hotel Antalya	<b>Chimney, Linen Chute</b>
Atikpaşa Four Seasons Hotel İstanbul	<b>Chimney, Linen Chute, Fan Automation</b>
Hilton Hotel Sophia - Bulgaria	<b>Chimney</b>
Atatürk Airport Yeşilköy İstanbul	<b>Refuse Chute, Diesel Generator Chimney</b>
Ashgabat Airport - Turkmenistan	<b>Chimney</b>
Turkmenbashi Airport - Turkmenistan	<b>Chimney</b>
Cairo Airport - Egypt	<b>Free Standing Chimney</b>
Tbilisi Airport - Georgia	<b>Chimney</b>
Batumi Airport - Georgia	<b>Chimney</b>
Erbil Airport - Iraq	<b>Chimney</b>
Sulaimaniya Airport - Iraq	<b>Chimney</b>
Esenboğa Airport Ankara	<b>Chimney</b>
S.G. Airport Old and New Terminal Kurtköy İstanbul	<b>Free Standing Chimney</b>
Adnan Menderes Airport İzmir	<b>Chimney</b>
Antalya Airport Antalya	<b>Chimney</b>
VRP Vatsal Train Station - Turkmenistan	<b>Chimney</b>
Rusal Office Buildings - Kazakhstan	<b>Free Standing Chimney</b>
32 Hectare Residence Project - Kazakhstan	<b>Free Standing Chimney</b>
Esentai Park Almaty - Kazakhstan	<b>Refuse Chute With Separator</b>
Oran Sonatrach - Alger	<b>Chimney, Refuse Chute</b>
Harbiye Convention Center İstanbul	<b>Chimney</b>
Siberbank Center - Turkmenistan	<b>Chimney</b>
Liberty Mall Avm - Romania	<b>Chimney</b>
Ruse Mall Avm - Romania	<b>Chimney</b>
Cpm Constanta Avm - Romania	<b>Chimney</b>
Carrefour Avm - Romania	<b>Chimney</b>
Bucesti Mall Avm - Romania	<b>Chimney</b>
Mall Dova Avm - Romania	<b>Chimney</b>
City Mall Avm - Romania	<b>Chimney</b>
Maksima Avm Almaty - Kazakhstan	<b>Chimney</b>
Innova Bulvar Avm - Azerbaijan	<b>Chimney, Fan Automation</b>
Kanyon Eczbş. Avm Levent İstanbul	<b>Diesel Generator and Hood Chimney, Refuse Chute</b>
212 Avm Yenibosna İstanbul	<b>Chimney, Ventilation Towers</b>
Port Residence Baku - Azerbaijan	<b>Chimney</b>
Landmark 3 Baku - Azerbaijan	<b>Chimney</b>

# REFERENCES

Gara Herastrau Office Building - Romania	<b>Chimney</b>
Head Offices Victoriei Ester Auto Center - Romania	<b>Chimney</b>
Energy Ministry Building Ashgabat - Turkmenistan	<b>Chimney</b>
Health Ministry Building Ashgabat - Turkmenistan	<b>Chimney</b>
Ashgabat Theater Complex - Turkmenistan	<b>Chimney</b>
Middle East Technical University - Cyprus	<b>Chimney</b>
Near East University - Cyprus	<b>Chimney</b>
Durres Hospital - Albania	<b>Chimney</b>
Child Birth Hospital - Turkmenistan	<b>Chimney</b>
Oncology Hospital - Turkmenistan	<b>Chimney</b>
Four Seasons Hotel St. Petersburg - Rusia	<b>Linen Chute</b>
Noah's Arc Resort Hotel - Cyprus	<b>Chimney</b>
Jasmin Court Hotel - Cyprus	<b>Chimney</b>
Tashkent Friendship Hotel - Uzbekistan	<b>Chimney</b>
Bucharest Hotel - Romania	<b>Chimney</b>
Dushambe Hotel - Tajikistan	<b>Free Standing Chimney</b>
Hyatt Hotel - Azerbaijan	<b>Linen Chute</b>
Marriot Hotel Tbilisi - Georgia	<b>Chimney</b>
Park Hyatt Hotel Baku - Azerbaijan	<b>Linen Chute</b>
Intourist Hotel Batumi - Georgia	<b>Chimney</b>
Grand Vicory Hotel - Kazakhstan	<b>Chimney, Linen Chute</b>
Divan Hotel Tuzla İstanbul	<b>Chimney</b>
Pera Palas Hotel Taksim İstanbul	<b>Chimney, Linen Chute</b>
Aries 2 Factory Tashkent - Uzbekistan	<b>Chimney</b>
Johnson Control Factory - Romania	<b>Chimney</b>
Jonson Matthey Skopje - Macedonia	<b>Free Standing Chimney</b>
YKK Zippers Factory - Romania	<b>Chimney</b>
Namet Entegre Factory Çayırova İstanbul	<b>Chimney, Refuse and Bone Chute</b>
Milk Factory Baku - Azerbaijan	<b>Chimney</b>
Flipper Commeimpex Sri. Cips Factory - Romania	<b>Chimney</b>
Gourmat Olive Oil factory - Romania	<b>Chimney</b>
Euronut Gıda San. A.Ş. Nuts Factory - Romania	<b>Chimney</b>
Frans Maas Logistics - Romania	<b>Chimney</b>
Nissa Hotel - Turkmenistan	<b>Chimney</b>
Golden Plaza Hotel - Turkmenistan	<b>Chimney</b>
Delta Hotel - Turkmenistan	<b>Chimney</b>
Watanchy Hotel - Turkmenistan	<b>Chimney</b>
Kuwwat Hotel - Turkmenistan	<b>Chimney</b>
Kerwen Hotel - Turkmenistan	<b>Chimney</b>
Serene Hotel Dushambe - Tajikistan	<b>Chimney</b>

# REFERENCES



**Single and double wall  
stainless steel  
chimney systems**

Applications inside the building  
Applications outside the building  
Self Standing chimney systems  
Use in fuel-oil / gas / solid fuel

Negative pressure systems  
(max. 400 °C)

Positive pressure cascade systems  
(max. 160 °C)

Generator and cogeneration chimneys  
(max. 600 °C)

Both for wet and dry applications  
Leak proofing with or without sealing

**Equipments to solve chimney problems**  
**Filter systems tor gas cleaning**  
**Refuse chutes**  
**Linen chutes**

**rotek**  
"chimney expert"

**ROTEK ENERGY & CHIMNEY SYSTEMS**

**Head Office**

Necip Fazıl Mah. Kaynaşlı Sok. No:25/1 Sultanbeyli -İstanbul / TÜRKİYE  
T : +90 216 497 21 21 (Pbx) F : +90 216 497 22 06

**Factory**

Çerkeşli OSB Mah. İmes 9. Cad. No:27, 41455 Dilovası/Kocaeli  
T : + 90 262 502 46 66 F : + 90 216 497 22 06

[www.rotek.com.tr](http://www.rotek.com.tr)  
[rotek@rotek.com.tr](mailto:rotek@rotek.com.tr)

